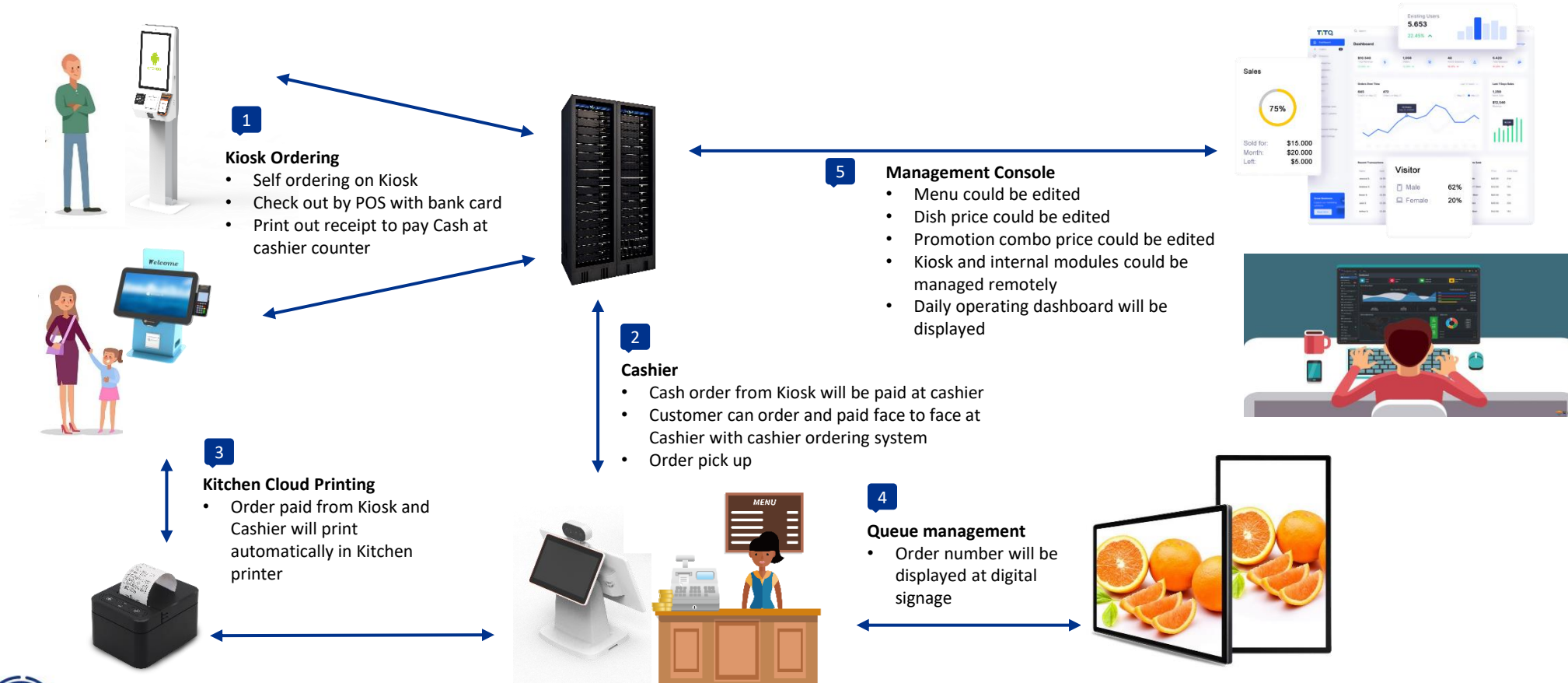


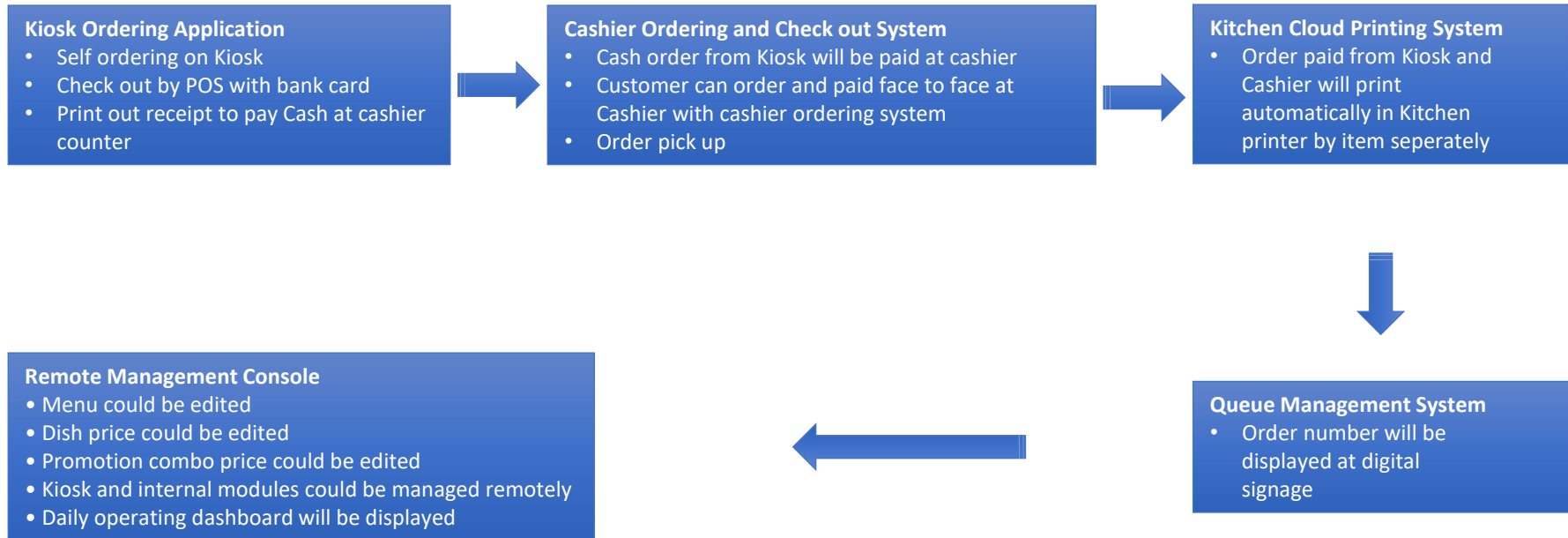


# Smart Ordering Solutions

# Smart Ordering Solutions



# Software Solution



# Hardware - Self Ordering Kiosk



1

- Industrial PC  
RK3399/4G/16G/  
Android 7.1/10.0

2

- 27inch PCAP  
TOUCHSCREEN

3

- 2D Scanner  
Support 1D/2D  
code

4

- Receipt Printer  
80mm paper  
width

5

- Contactless  
Card Reader

6

- External POS



# Hardware – Cashier POS




**D6-M**

**Display: 15.6"+10.1"**

Main Display: 15.6", 1920 x 1080

Vice Display: 10.1", 1280 x 800


 **System**  
Android 11


 **Processor**  
Cortex-A55 Quad-core 2.0GHz

 **Memory**  
2GB RAM+16GB ROM  
4GB RAM+16GB/32GB/  
64GB/128GB ROM(Optional)


 **Display**  
Main Display 15.6", 1920 x 1080  
1366 x 768 (optional)  
Vice Display 10.1"/15.6"


 **Communication**  
WIFI IEEE802.11 b/g/n  
Bluetooth 4.2  
10M/100M Ethernet

 **Button**  
Power Key x1, Reset Key x1

 **Peripheral Ports**  
RJ12/RJ45 x1  
USB 2.0 x4 (1 for OTG)  
DC-IN x1  
Headphone Jack x1

 **Power adapter**  
Input: 100~240VAC  
Output: 12V/3A

 **Scanner**  
Support (optional)

 **Dimensions**  
265(L)\*265(W)\*330(H)mm

 **Working Environment**  
Storage Temperature:-20°C ~ 60°C  
Operation Temperature:-10°C ~ 45°C  
(noncondensing)

 **Certification**  
CCC



# Hardware - 43 Inch Display



1

- 43 inch LED  
Industrial level

2

- Android OS

3

- Full HD  
1920X1080

4

- Brightness  $\geq$   
350cd/m<sup>2</sup>

5

- WIFI /3G /4G /  
LAN





# Software - Cashier System

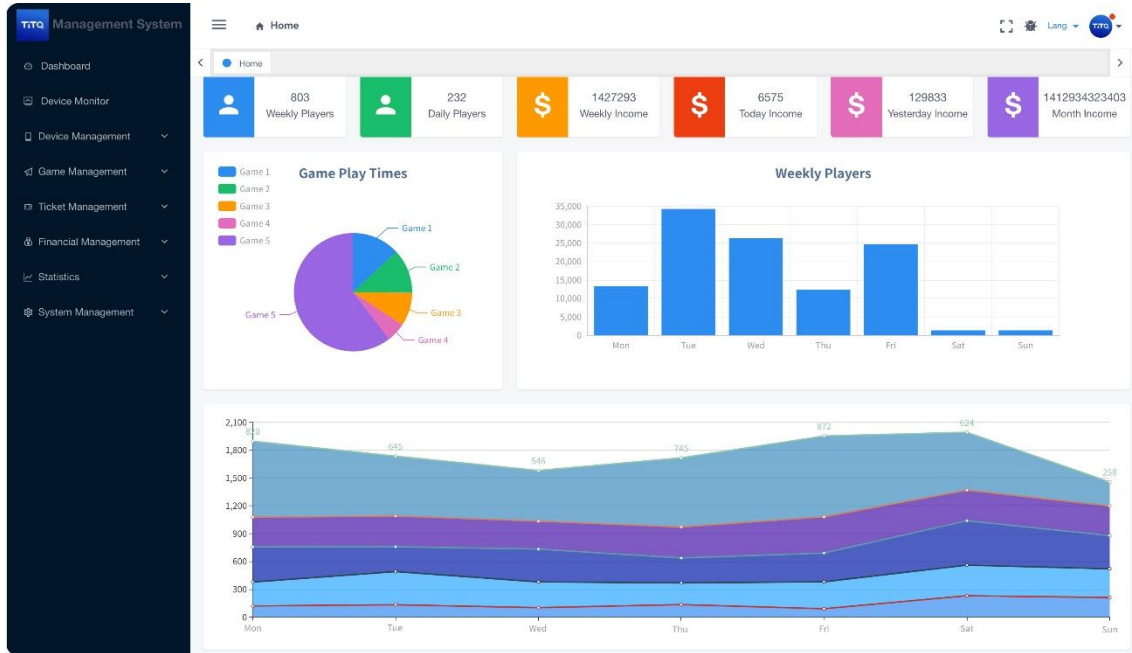


The screenshot displays the TITO Cashier System interface, which is divided into several functional areas:

- Product List:** A table showing order details with columns for ID, Table Order, Table No., Qty, Price, Status, and Date & Time. It lists 7 orders, including items like Green Tea Letter (ice), Lemon Tea (ice), and Caramel Macchiato.
- Transaction:** A section for managing transactions, showing a list of items with their prices and quantities, and a total amount of 25.77.
- Table Listing:** A grid of 20 numbered buttons (1-20) representing tables, with some buttons highlighted in green and red.
- Admin Settings:** A section for configuring the system, including Admin Setting, Basic Setting, Payment Setting, Third Party, Password Setting, and Product & Backup.

- 1
- Order
- 2
- Dashboard
- 3
- Transaction
- 4
- Dine in
- 5
- Ticket
- 6
- Setting

# Software -Management Console TITO



1

- Kiosk Monitoring System

2

- Operating Log Monitoring System

3

- Promotion Management System

4

- Administrator Operating System

5

- Financial Management System

6

- Data Statistics Management

7

- Queue Management System



# Thanks

[www.tita-tech.com](http://www.tita-tech.com)